

Drawing



Tools for Chefs

Hendi B.V.

Innovatielaan 6
6745XW De Klomp
The Netherlands

Batch #

000000 and up

Appliance part#

236017

Description

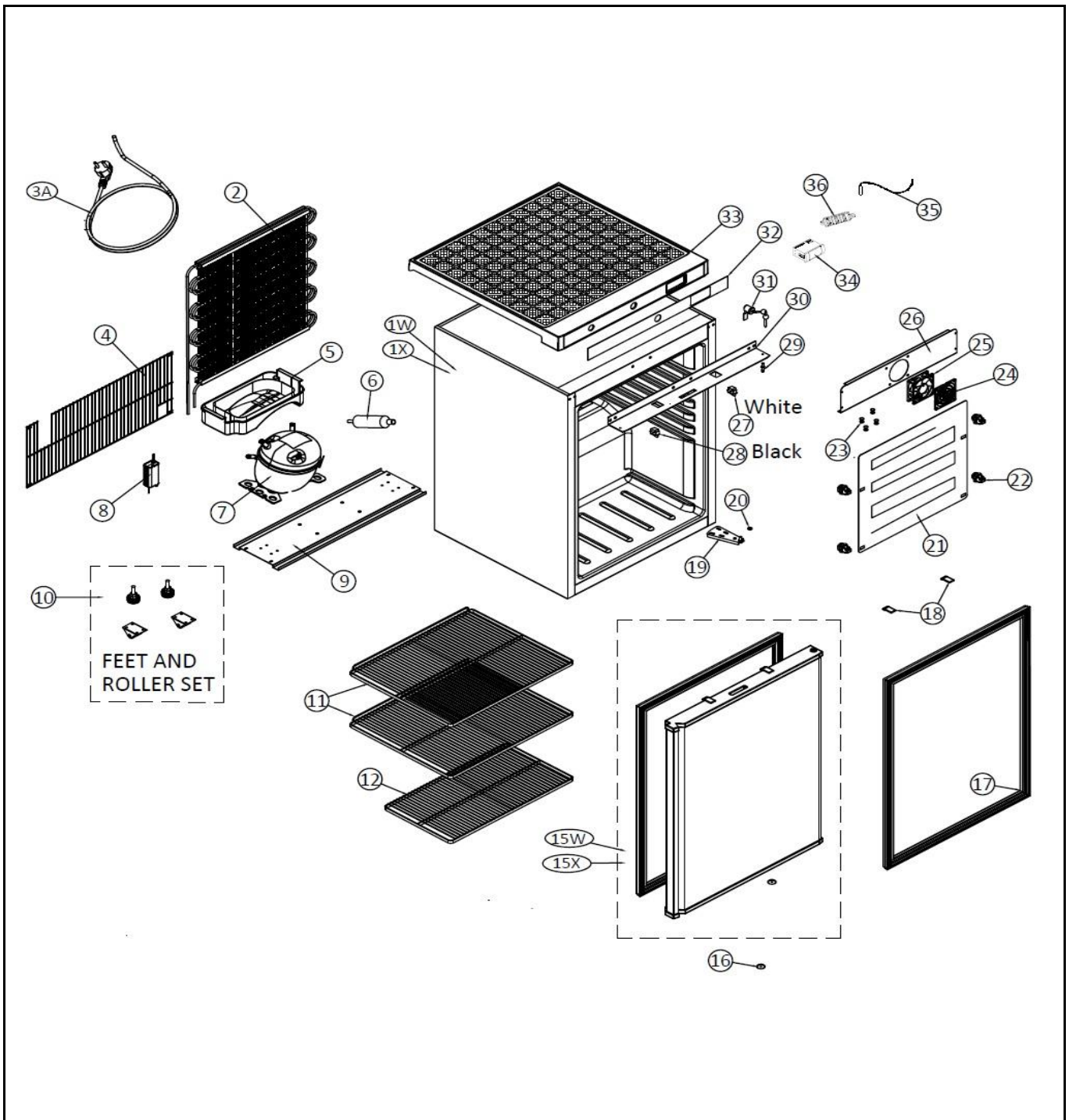
Budget Line cooling cabinet (steel)

Date 26-06-2026


Revision #

V.01

Revision First Bill of Materials (BOM)



Bill of materials (BOM)

 HENDI Tools for Chefs Hendi B.V. Innovatielaan 6 6745XW De Klomp The Netherlands	Batch #	Appliance part#
	000000 and up	236017
	Description	
	Budget Line cooling cabinet (steel)	


Date	26-06-2026	Revision #	V.01
Revision	First Bill of Materials (BOM)		

Item	Description	Part#	Quantity	Remark	Picture
1X	Cooler body assembly (steel)	n/a	1		
2	Condensor	n/a	1		
3A	Power cord EU	n/a	1		
4	Safety grid engine	n/a	1		
5	Drain pan compressor	973455	1		
6	Dryer filter	n/a	1		
7	Compressor	n/a	1		
8	Power supply	973387	1		
9	Base plate engine	n/a	1		
10	Feet and roller set	973394	1		
11	Shelf (middle)	973448	2		
12	Shelf (bottom)	973462	1		
15X	Door (cooler, include gasket, steel))	n/a	1		
16	Cover plug hole	973400	1		
17	Gasket (door)	973479	1		
18	Door stop	n/a	1		
19	Hinge (bottom)	n/a	1		
20	Spacer hinge (bottom)	n/a	1		
21	Evaporator roll bond and capillary (white)	n/a	1		
22	Holder roll bond	n/a	4		
23	Screw cover (white)	n/a	4		
24	Fan safety grid (evaporator)	n/a	1		
25	Fan	973486	1		
26	Support bracket fan	n/a	1		
27	Door alarm switch (white)	n/a	1		
28	Fan / Light switch (black)	n/a	1		
29	Pivot for hinge (upper/bottom)	n/a	1		
30	Support bracket solid door	n/a	1		
31	Lock	973417	1		
32	Sticker for front panel	n/a	1		
33	Top panel for door	n/a	1		
34	Digital control unit	973431	1		
35	Sensor	973424	1		
36	Sensor bracket	n/a	1		

n/a -> not available

nss -> not sold separately

Dimensional drawing

 <b style="font-size: 24px; font-weight: bold;">HENDI Tools for Chefs Hendi B.V. Innovatielaan 6 6745XW De Klomp The Netherlands	Batch #	Appliance part#
	000000 and up	236000-017
	Description	
	Budget Line cooling cabinet (steel)	

Date	26-06-2026	Revision #	V.01
Revision	First Bill of Materials (BOM)		

