

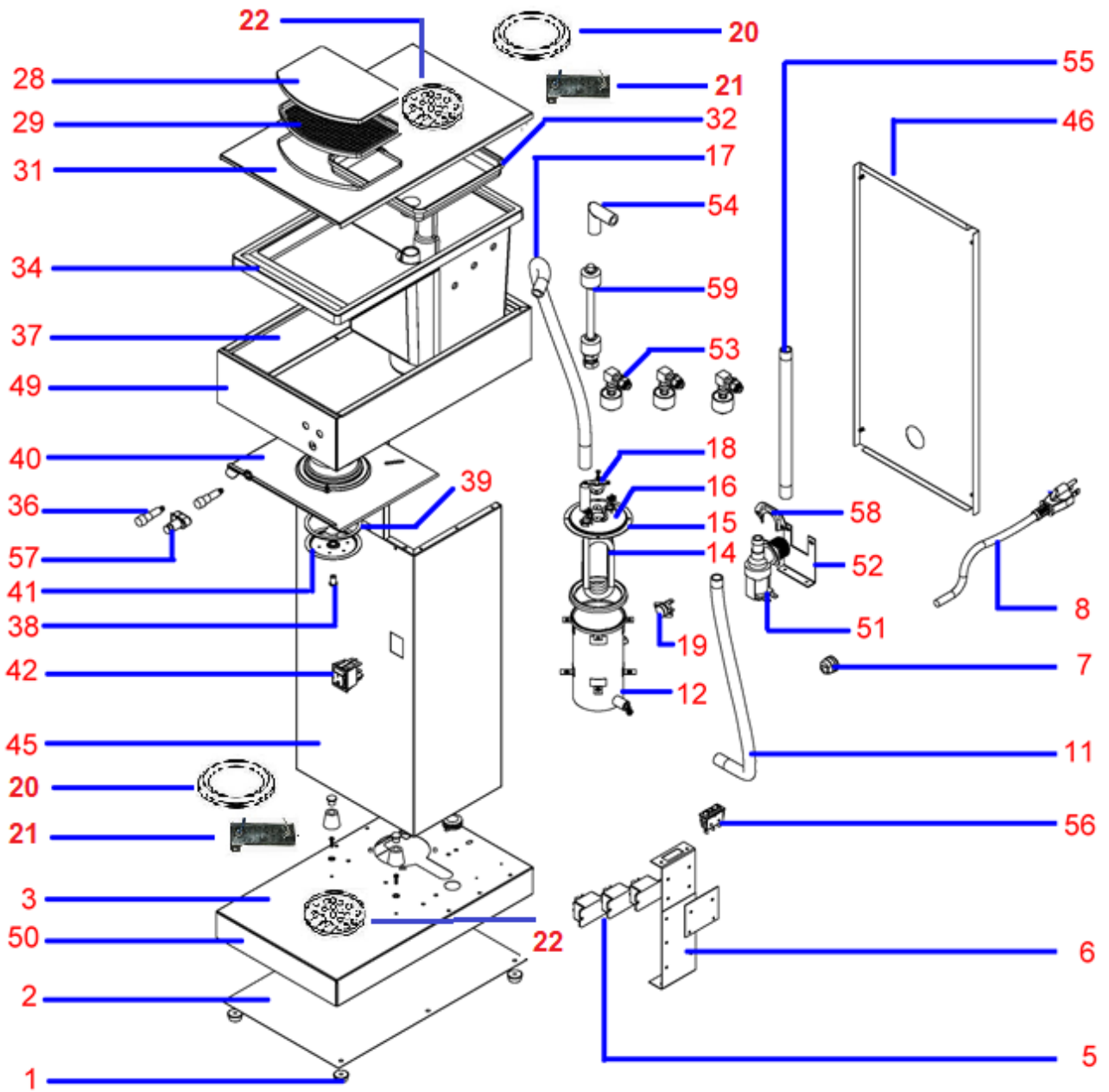
07/2021

# **Mod: PCF-A2/F**

**Production code: 6.0.145.0004**

**AUTOMATIC FILTER COFFEE BREWER****AUTOMATIC FILTER COFFEE BREWER PCF-A2/F – 6.0.145.0004**

POWER	1885 - 2243W
POWER SUPPLY	220-240V~, 50/60Hz
NET WEIGHT	7.9Kg
DIMENSIONS (LxWxH)	196x360x430mm
PACKAGE DIMENSIONS (LxWxH)	240x460x475mm
OBS	INCLUDES 2 JARS (1,8 Lts)



<b>Nº</b>	<b>DESIGNATION</b>	<b>ARTICLE Nº</b>
1	FOOT	5.0.145.0040
2	BOTTOM COVER	
3	BASE FRAME	
5	* RELAY	5.0.145.0022
6	RELAY HOLDER	
7	WIRE CLIP	
8	POWER CORD + PLUG	
11	INFLOW PIPE	5.0.145.0036
12	BOILER TANK	5.0.145.0024
14	* MAIN HEATER	5.0.145.0025
15	SEALING RING OF BOILER	5.0.145.0037
16	LID OF BOILER TANK	
17	OUTFLOW PIPE	5.0.145.0033
18	* AUTO THERMOSTAT	5.0.145.0020
19	* MANUAL THERMOSTAT	5.0.0145.0021
20	WARMING PLATE	5.0.145.0039
21	* MICA HEATING PLATE	5.0.145.0038
22	FEVER PARTITION	
31	UPPER COVER	5.0.145.0041
32	WATERPROOF PANEL	5.0.145.0035
34	WATER RESERVOIR	5.0.145.0031
36	* INDICATOR (RED)	5.0.145.0023
37	UPPER FRAME	
38	SCREW OF SPRINKLER	5.0.145.0028
39	SEALING RING OF SPRINKLER	5.0.145.0030
40	SPRINKLER HOLDER	5.0.145.0034
41	SPRINKLER	5.0.145.0029
42	* POWER SWITCH SINGLE	5.0.145.0043
45	BODY FRAME	
46	REAR COVER	
49	UPPER PANEL	
50	LOWER PANEL	
51	SOLENOID VALVE	
52	SOLENOID FIXER	
53	* LEVEL SWITCH	5.0.145.0044
54	ELBOW IN TANK	5.0.145.0045
55	INFLOW PIPE	
56	SHIFT SWITCH OF CAPACITY	
57	* PUSH SWITCH	5.0.145.0046
58	SOLENOID VALVE HOLDER	
59	* DOUBLE FLOAT SWITCH	5.0.145.0047