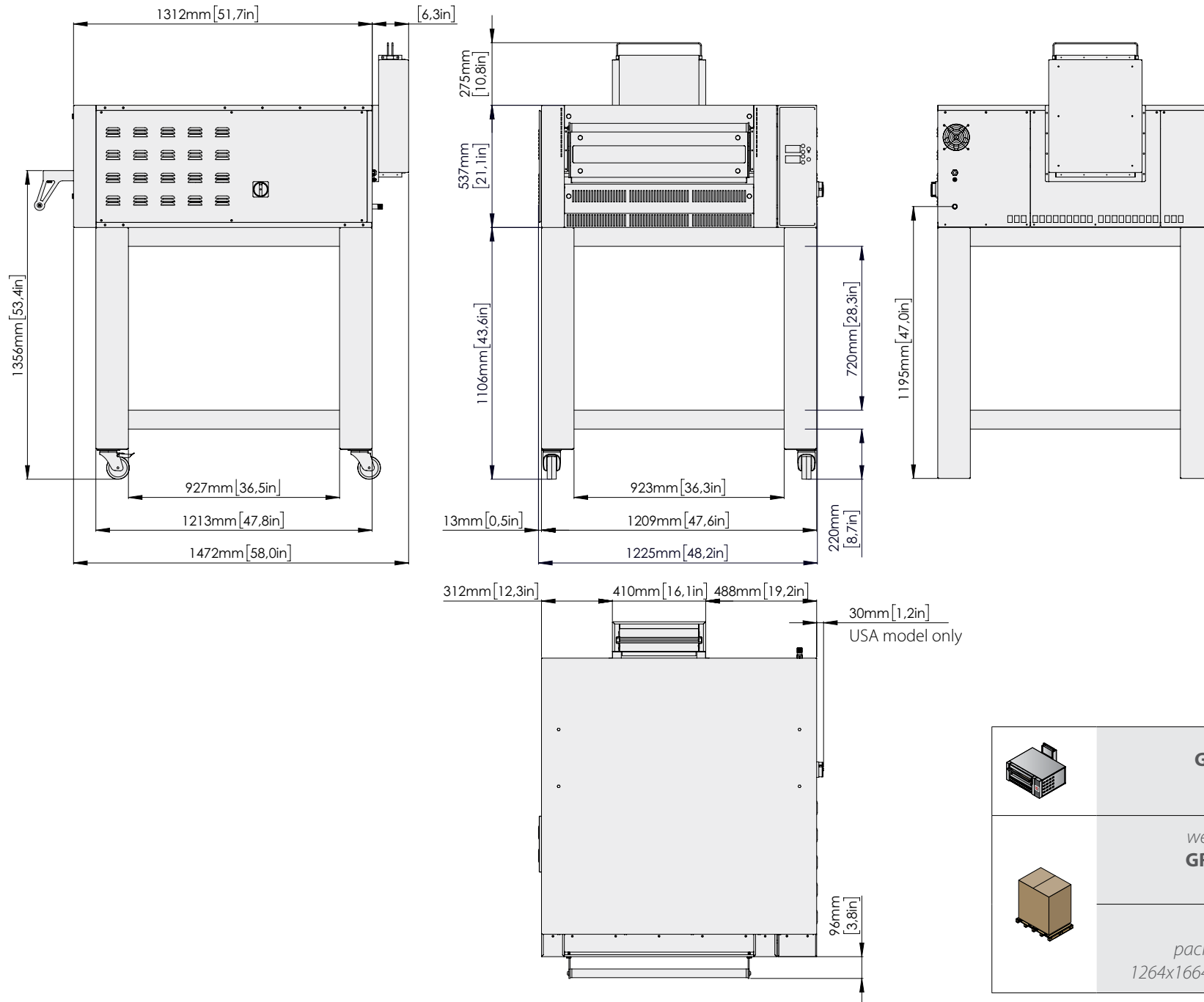




08/2021

Mod: GL6/35-D

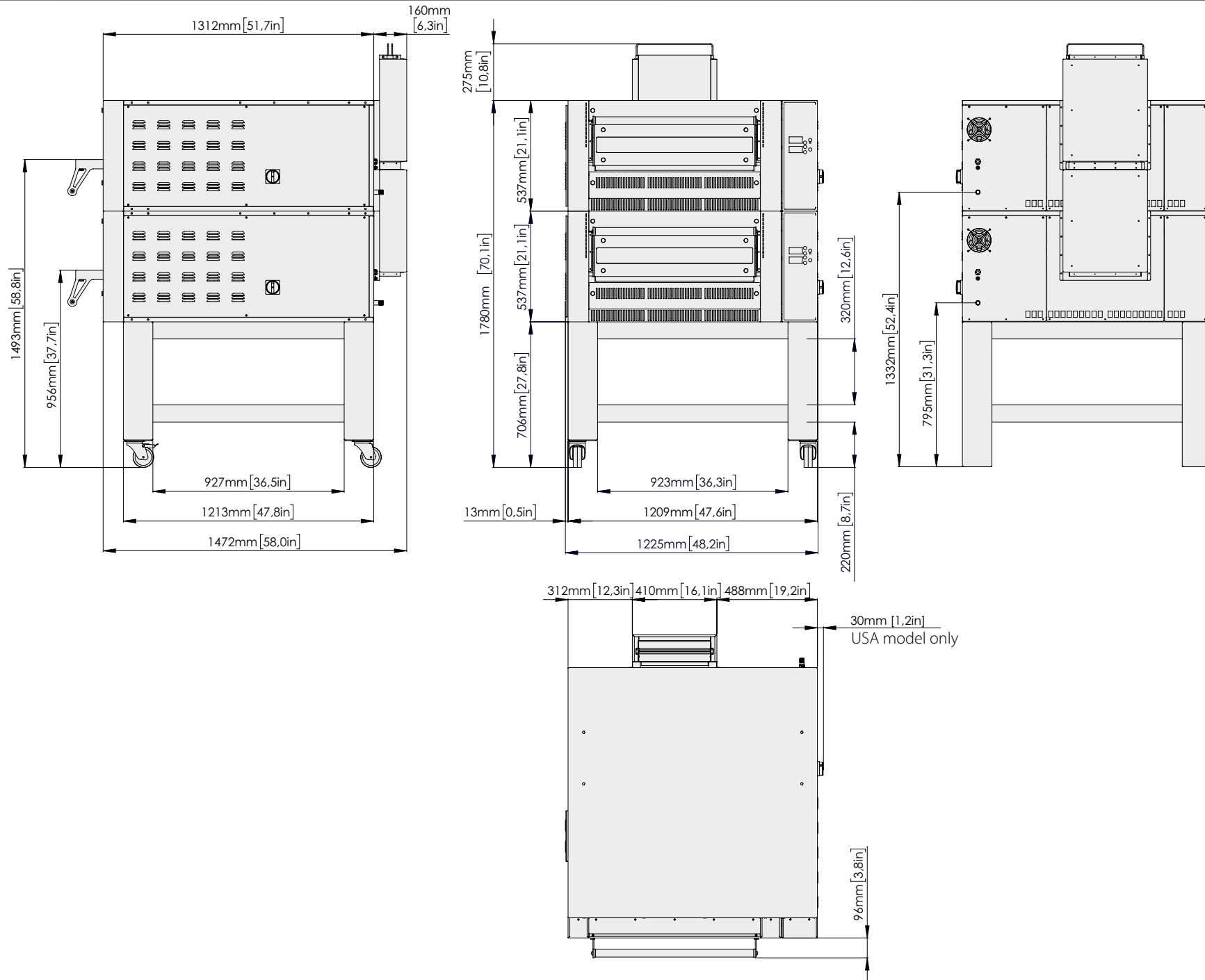
Production code: GR635/1D

GR635 SINGLE oven technical data

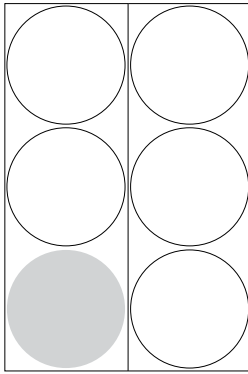
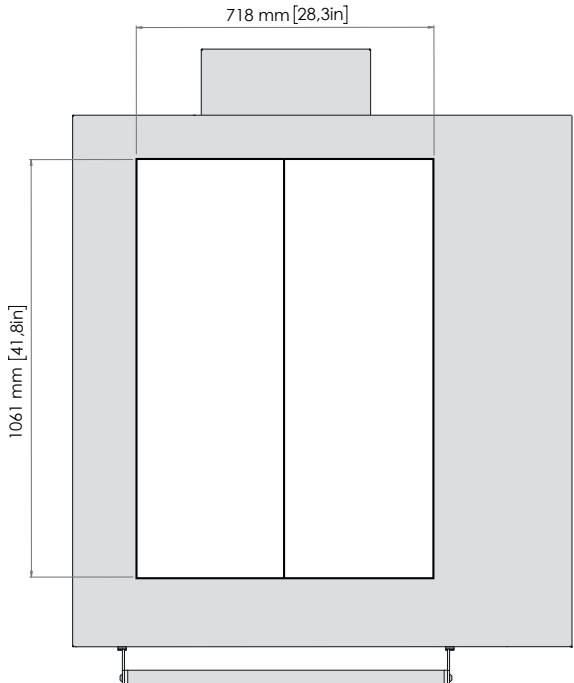


	GR635 oven weight 219 - 483 lb
	<i>weight of packaging +</i> GR635 complete oven 254 kg 560lb
	GR635 oven <i>packaging measurements</i> 1264x1664x739 [49.76x65.51x29.09 in]

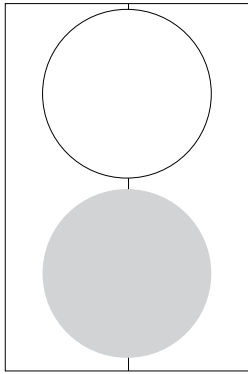
GR635 DOUBLE oven technical data



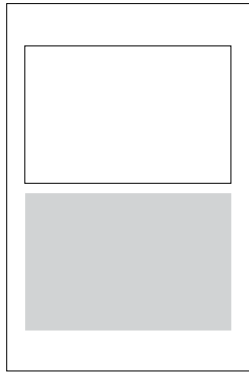
GR635 oven technical data | capacity



PIZZA
Ø 35 cm [Ø 13.78in.]



PIZZA
Ø 50 cm [Ø 19.69 in.]



BAKING-TIN
60x40 cm [23.62x15.75 in.]

	Ø PIZZA	HOURLY PRODUCTIVITY	NO. OF BAKES
○	Ø 35 cm [Ø 13.78 in.]	48-54 pizzas	8-9
●	Ø 50 cm [Ø 19.69 in.]	16-18 pizzas	8-9
■	60x40 cm [23.62x15.75 in.]	8-10 trays	4-5

chamber height: 140 mm [5.51 inches]

ALIGNMENT OF THE OVEN WITH THE SUPPORT

If the gas oven is to be placed on a manufacturer's support, make the oven rear corners match the rear corners of the support.

