

11/2016

# **Mod: EDI/PLCD7**

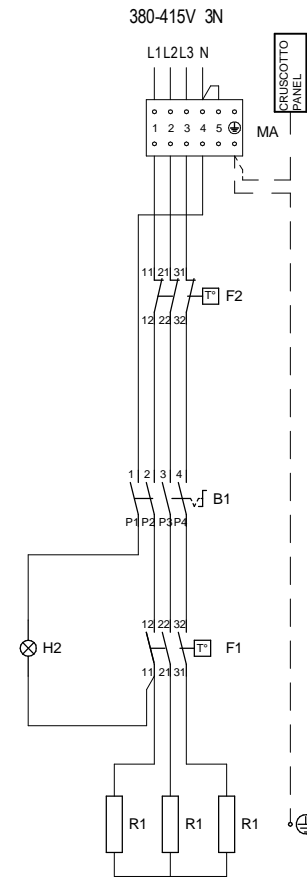
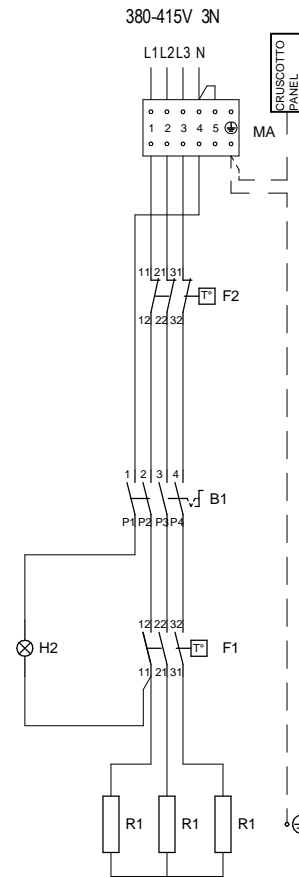
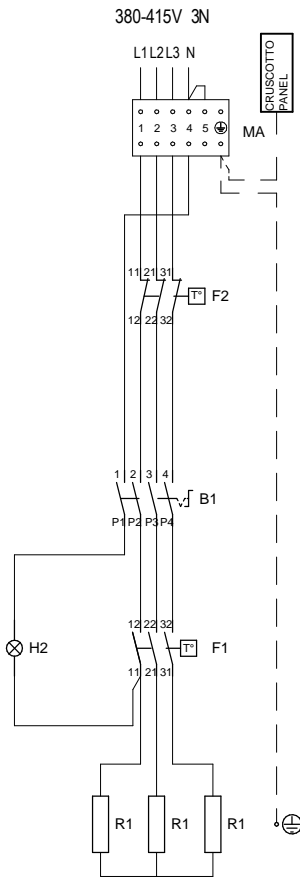
**Production code: 65/70 FTE-CR-D**



**Diamond**  
catering equipment

Mod.	kW	Volt	Ampere	Hz	Cable	NOTE
60/30 FT...E-D	3	380-415V 3N	5	50-60	5G1mm <sup>2</sup>	
60/30 FT...E-CR-D	3	380-415V 3N	5	50-60	5G1mm <sup>2</sup>	
65/40 FT...E-D	4,5	380-415V 3N	7	50-60	5G1,5mm <sup>2</sup>	
65/40 FT...E-CR-D	4,5	380-415V 3N	7	50-60	5G1,5mm <sup>2</sup>	

Mod.	kW	Volt	Ampere	Hz	Cable	NOTE
60/60 FT...E-D	3 (x2)	380-415V 3N	5 (x2)	50-60	5G1mm <sup>2</sup> (x2)	
60/60 FT...E-CR-D	3 (x2)	380-415V 3N	5 (x2)	50-60	5G1mm <sup>2</sup> (x2)	
65/70 FT...E-D	4,5 (x2)	380-415V 3N	7 (x2)	50-60	5G1,5mm <sup>2</sup> (x2)	
65/70 FT...E-CR-D	4,5 (x2)	380-415V 3N	7 (x2)	50-60	5G1,5mm <sup>2</sup> (x2)	



B1	INTERRUTTORE _ SWITCH _ INTERRUPTEUR _ SCHALTER _ INTERRUPTOR
F1	TERMOSTATO _ THERMOSTAT TERMOSTATO
F2	TERMOSTATO SICUREZZA _ THERMOSTAT DE SECURITE SAFETY THERMOSTAT _ TEMPERATURBEGRENZER _ TERMOSTATO DE SEGURIDAD
H2	LAMPADA SPIA ARANCIO _ LAMPE TMOIN ORANGE _ ORANGE INDICATOR LIGHT _ ORANGE KONTROLLAMPE _ INDICADOR LUMINOSO NARANJA

MA	MORSETTIERA ARRIVO LINEA _ POWER INLET TERMINAL BOARD ANSCHLUSSBRETT _ BORNES ARRIVE LIGNE _ BLOQUE TERMINAL LINEA
R1	RESISTENZA _ HEATING ELEMENT HEIZKOERPER _ RESISTANCE _ RESISTENCIA



Prima di intervenire sull'apparecchiatura, scollegare l'alimentazione elettrica - Unplug the power supply before operating on the appliance  
 Bevor am gerät arbeiten ausschalten sré die elektrische speisung  
 Avant d'intervenir sur l'appareil, déconnectez l'alimentation électrique - Desconectar el alimentación antes cualquier intervención sobre el aparato

MODELLO:

**FRYTOP - GRILLADE -  
GRILLPLATTEN - GRILLPLAAT**

nome:	data:	modif.:
Lot F.	10/03/2015	
CODICE:	<b>251.997.13</b>	FOGLIO: 1/1