

08/2017

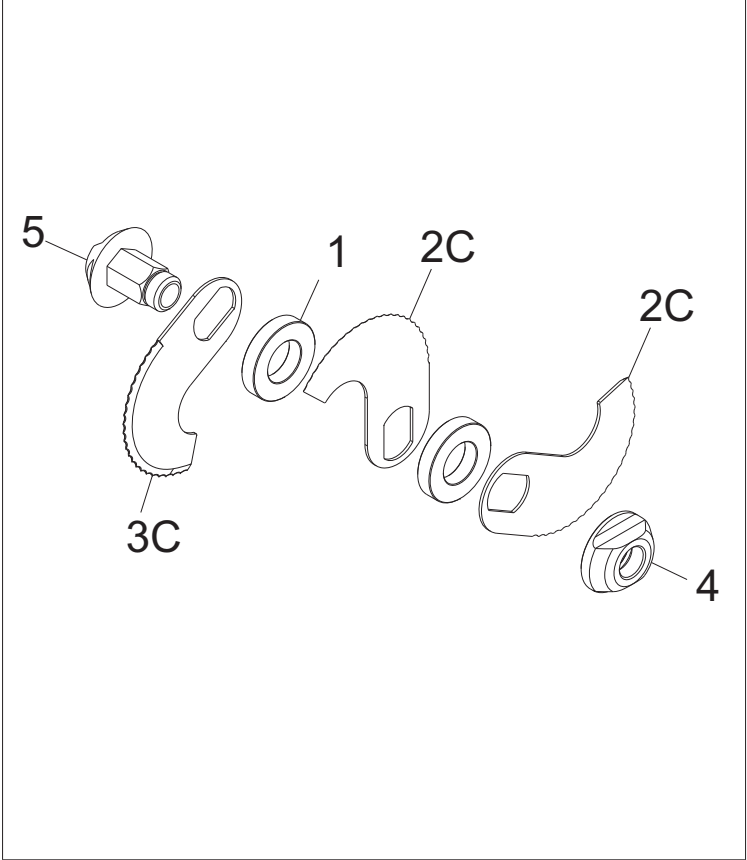
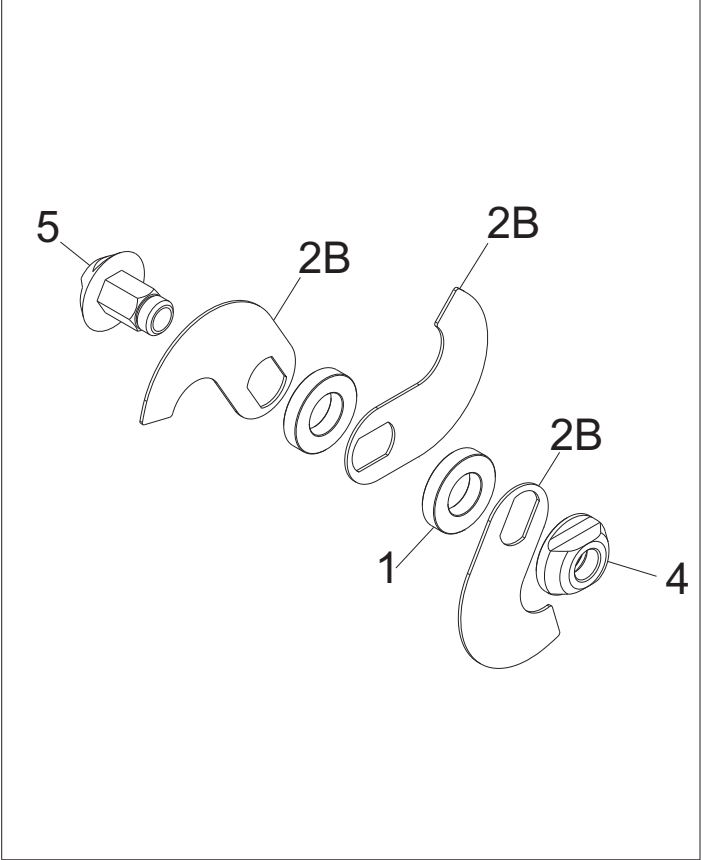
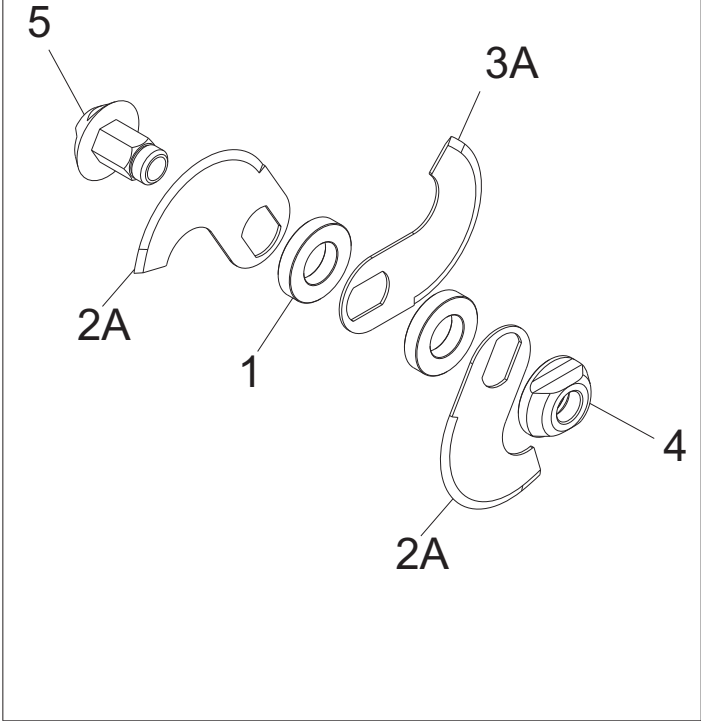
Mod: **CUT-H12VV**

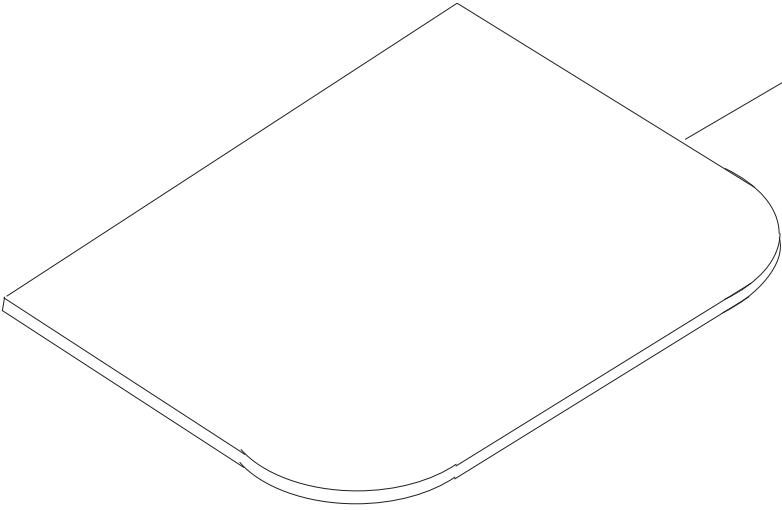
Production code: 40794852



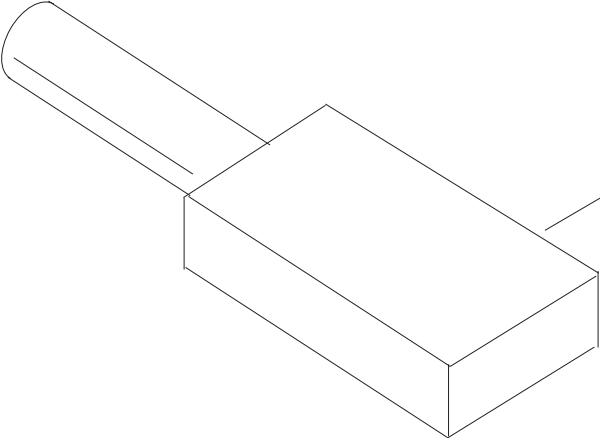
Diamond
catering equipment

A1





200



201

KATANA 12 VV 230/50/1 - from 2017.04.05			
Ref.	Product name	Code	Q
1	GUIDA DIN OMEGA H.7MM L=20MM	LF1000416020	5
2	STRAIN RELIEF + NUT	LF1010063	1
4	PRESSACAVO PLASTICA PG 11	LF1010072	5
6	PRESSACAVO + DADO PLASTICA PG 13,5	LF1010075	5
8	KEY PAD IS-SO	LF1013032	1
9	SCHEDA INTERFACCIA CZ01-B IS BZ	LF1013060	1
10	SENSORE PROXIMITY IS BZ	LF1013063	1
11	TELERUTTORE 24 CC CUT.IND.	LF102106020	1
12	POTENZIOMETRO VAR. VEL CUT.IND.	LF102112001	1
13	INVERTER DSA F 1,1KW MN CUT IND 12	LF102112005	1
14	ALIMENT. 500 MA 230V->24DC	LF102112010	1
15	MORSETTO A PETTINE X EQUIPOTENZ. BZ	LF1030522050	1
16	MICRO IP 67 HAMB. SEMIAUT. BZ	LF1030522066	1
17	SCAT.GRIGIA ELETTR. ABB. 0852	LF1041006	1
18	S/S ON BUTTON W/LAMP OMEGA 24 V	LF1041015	1
19	S/S OFF BUTTON	LF1041018	1
20	CAVO 3 X 1 CON SPINA SHUKO	LF1061005	1
21	BALL BEARING 6004 2RS	LF1110701	1
22	CUSCINETTO 6006 2RS	LF1150010	1
23	ANEL.TEN. 30-40-5 VITON LABBRO SING	LF122106001	1
24	ANEL.TEN. 20-42-7 DOPPIO LABBRO	LF1221100	1
25	RASCHIATORE VASCA CUT.IND.	LF142106010	1
26	RULLO COMPLETO TENDICING. CUT.IND.	LF142106045	1
27	LID GASKET A KATANA 12	LF142112001	1
28	LID GASKET C KATANA 12	LF142112005	1
29	CINGHIA GOMMA 660 J8 CUT.IND.C12	LF142112020	1
30	FLANGIA CANOTTO CAVA CUT.IND.C12	LF142112035	1
31	FLANGIA CANOT.CAVA INT. CUT.IND.C12	LF142112040	1
32	FLANGIA CANOTTO CUT.IND.C12	LF142112045	1
33	TAPPO CHIUSURA DIAM.FORO 7,9 MM	LF142112060	1
34	SPACER D.50, THICK 10 _ KATANA 20	LF142120015	1
35	PROT.PVC NERO FLANGIA+TUBO CUT.IND	LF142120030	1
36	PIEDINO ANTIV. 40X50 PM M8X23 70SH	LF1433007	1
37	TAPPO COPRI FORO FLANGIA GTX	LF1452507	10
38	HANDLE 236-148 M5 INTER 94	LF1510012	1
39	COLTELLO AFF. SING. DX CUT.IND.C12	LF152112003	1
40	COLTELLO AFF. DOPPIA CUT.IND.C12	LF152112005	1
41	KNOB FOR FIXING CONTAINER_IP 50-100	LF1541001	1
42	MOT. M56 HP 0,09 B14 4P 230/50 HZ	LF182120053	1
43	MOTOR HP 2 400/50 _ TC 22 NEVADA	LF1831401	1
44	PIASTRA GUIDA VASCA CUT.IND.C6	LF202106027	1
45	RID. MNRV 030 B14 P56 I=100 C6	LF202106055	1
46	CHIAVE BLOCCO MOZZO PIEG. CUT.IND.	LF202106070	1
47	RINFORZO PIASTRE MOT CUT.IND.C6	LF202106110	1
48	FLANGIA SUPP CUSC COLT CUT.IND.C6	LF202106130	1
49	OMEGA SUPP COPERC.H=45,5 CUT.IND.C6	LF202106137	1
50	PIASTRINA TENDICINGHIA CUT.IND.	LF202106145	1

51	ALBERO TRASC VASCA CUT.IND.C6	LF202106210	1
52	LOCKING RING _ KATANA	LF202106220	1
53	BLADE HOLDING SHAFT _ KATANA	LF202106225	1
54	PERNO SUPP COPERCHIO CUT.IND.C6	LF202106230	1
55	PULEGGIA SUP ø50 J12 CUT.IND.C6	LF202106240	1
56	FLANGIA INOX SUPP.TUBO CUT.IND.	LF202106265	1
57	BASAMENTO CARENA CUT.IND.C12	LF202112001	1
58	CALOTTA CARENA CUT.IND.C12	LF202112005	1
59	CARTER POSTERIORE CUT.IND.C12	LF202112010	1
60	LID KATANA 12	LF202112015	1
61	TUBO 35X1,5 L=255,7 CUT.IND.C12	LF202112023	1
62	VASCA COMPLETA CUT.IND.C12	LF202112027	1
63	SUPP. COPERCHIO CUT.IND.C12	LF202112030	1
64	PIASTRA SUPP. COPERCHIO CUT.IND.C12	LF202112033	1
65	PULEGGIA X MOT.MEC 80 CUT.IND.C12	LF202112053	1
66	LAMIERA SUPPORTO SBLOC. CUT.IND.C12	LF202112070	1
67	FONDELLO BAS. CARENA CUT.IND.C12	LF202112100	1
68	SUPP.MOTORE TELAIO ANT CUT.IND.C12	LF202112105	1
69	SUPP.MOTORE TELAIO POST CUT.IND.C12	LF202112115	1
70	OMEGA SUPP RID. VASCA CUT.IND.C12	LF202112120	1
71	OMEGA SUPP COPERCHIO CUT.IND.C12	LF202112140	1
72	SUPPORTO MICRO SBLOC CO CUT.IND.C12	LF202112145	1
73	COPERCHIETTO FORO VASCA CUT.IND.C12	LF202112150	1
74	ALBERO PORTA COLTELLI CUT.IND.C12	LF202112200	1
75	PERNO CANOTTO CUT.IND.C12	LF202112255	1
76	PRESSORE IX SFERA/MOLLA APS/16I-M8	LF2039286	1
77	CANOTTO FERMA CULLA IP	LF2041029	1
78	SPRING	LF2041031	1
79	FLANGIA RIDUTTORE ME 10 MP COMP	LF2043136	1
80	WASHER DIN 125 D3	IX2125003	10
81	WASHER FLAT DIN 125 D.4	IX2125004	1
82	FLAT WASHER DIN 125 D 6	IX2125006	10
83	FLAT WASHER DIN 125 D 8	IX2125008	20
84	WASHER DIN 125 D 10	IX2125010	20
85	CAP NUT DIN 1587 M 6	IX21587LC006	10
86	WING NUT DIN 315 M 12	IX2315012	1
87	NUT ES. DIN 439 M 10 BASSO	IX2439010	10
88	RING DIN 471 D20E	IX2471020	10
89	ANELLI D ARRESTO DIN 471 D 30E	IX2471030	1
90	RONDELLA DENTEL. DIN 6798-A D 8E	IX26798A008	20
91	RADIAL CIRCLIPS DIN 6799 M8	IX26799008	1
92	PIN DIN 6885/A 5X5X20	IX26885A050520	1
93	KEY DIN 6885/A 8X7X28	IX26885A080728	1
94	VITE TSPEI DIN 7991 M 6X14	IX27991006014	10
95	VITE TSPEI DIN 7991 M 6X20	IX27991006020	10
96	VITE TSPEI DIN 7991 M 6X25	IX27991006025	10
97	VITE TC- DIN 84 M 3X20	IX284003020	20
98	WASHER LARGE DIN 9021 D 5X15	IX29021005015	20
99	WASHER LARGE DIN 9021 D 6X18	IX29021006018	20
100	RONDELLA F.LARGA DIN 9021 D 6X24	IX29021006024	20

101	WASHER DIN 9021 D 8X24	IX29021008024	10
102	HEX.SOCKET HEAD CAP SCREW M5 X 16	IX2912005016	10
103	SCREW TCEI DIN 912 M 6X12	IX2912006012	10
104	HEX.SOCKET HEAD CAP SCREW M6 X 20	IX2912006020	10
105	VITE SENZA TESTA DIN 913 M 4X16 CE	IX2913004016	5
106	VITE SENZA TESTA DIN 913 M 6X45 CE	IX2913006045	5
107	VITE SENZA TESTA DIN 916 M 6X6 CE	IX2916006006	10
108	HEX.SCREW DIN 933 M6 X 25	IX2933006025	10
109	VITE TE DIN 933 M 8X16 T.F.	IX2933008016	10
110	HEX.SCREW DIN 933 M8 X 20	IX2933008020	10
111	VITE TE DIN 933 M 8X30 T.F.	IX2933008030	10
112	NUT DIN 934 M3	IX2934003	10
113	HEX.NUT DIN 934 M 6	IX2934006	20
114	VITE TSP- DIN 963 M 4X55	IX2963004055	1
115	DADO AUTOBLOCC. ES DIN 982 M 4 ALTO	IX2982004	20
116	LOCKNUT ES DIN 982 M6 ALTO	IX2982006	20
117	DADO AUTOBLOCC. ES DIN 982 M8 ALTO	IX2982008	10
118	RONDELLA SPES.IX.DIN 988 10X16X0,1	IX2988010016010	1
119	VITE POELIERS M 4X8	IX2POEL004008	20
120	VITE POELIERS M 4X10	IX2POEL004010	20
121	VITE POELIERS M 4X12	IX2POEL004012	20
122	VITE POELIERS M 5X10	IX2POEL005010	20
123	VITE POELIERS M 6X10	IX2POEL006010	10
124	VITE POELIERS M 6X16	IX2POEL006016	1
125	VITE POELIERS M 8X12	IX2POEL008012	5
126	BALL DIAM.13,5 _ TC 8 VEGAS	29320201	5
127	FLANGE MOTOR HOLDER _ TC 8 VEGAS	29561200	1
130	CONDENSATORE DA 6,3 UF	LF1011006,3	1

KATANA 12 VV 230/50/1 - from 2017.04.05			
Ref.	Product name	Code	Q
A1	ASS. MOZZO CUT.IND C12 STD	LF0221A12030503	1
1	SPACER D.50, THICK 10 _ KATANA 20	LF142120015	1
02C	COLT. AFF. SX DENT CUT.IND.C12	LF152112011	1
02B	COLT. BATTITURA CUT.IND.C12	LF152112010	1
02A	COLTELLO AFF. SING. DX CUT.IND.C12	LF152112003	1
03C	COLT. AFF. DX DENT CUT.IND.C12	LF152112013	1
03A	COLTELLO AFF. DOPPIA CUT.IND.C12	LF152112005	1
4	LOCKING RING _ KATANA	LF202106220	1
5	BLADE HOLDING SHAFT _ KATANA	LF202106225	1

KATANA 12 VV 230/50/1 - from 2017.04.05			
Ref.	Product name	Code	Q
200	BOWL SCRAPER, RED COLOUR	MSC04N200	1
201	SHARPENING STONE, CUTTER	MSC04N174	1