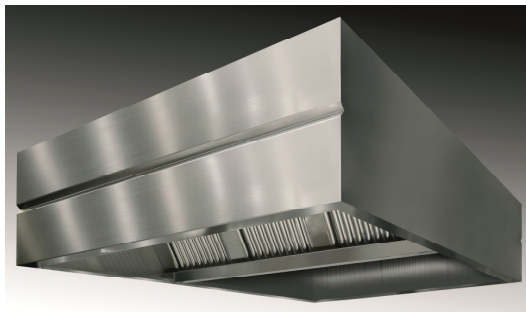


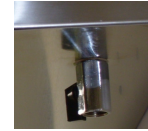
02/2021

Mod: KUP1413

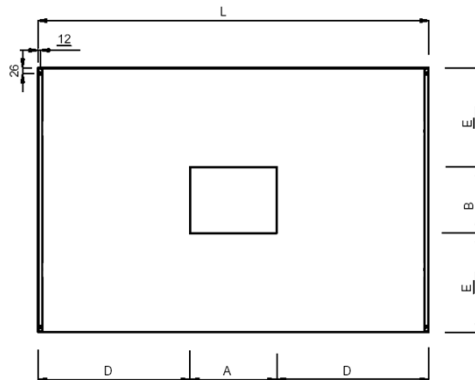
Production code: CP1314BB

Technical data sheet

**WALL-MOUNTED CUBIC
 HOTTE 130x140 WITH LIGHTING AND
 WELDED GOULOT**


collection lighting



drain valve



front with your brand

- . One-piece hood made of AISI 304 stainless steel, satin finish, scotch-brite, in all its visible parts. Fume hood assembled by electrical punching.
- . Labyrinth filters in stainless steel network
- . Special anti-drip chute for grease collection.
- . Grease drain tap

Or provided:

- IP65 lamp with or without recessed lighting.
- Built-in Hoover 230/1/50 IP55
- Speed regulator 5A
- Grease duct welded to the hoods with recessed lighting - Wall mounting system

Dimensions en cm - PxLxH 130 x 140 x 45	Hoover NO
Holes for suction- n° - dimens.en cm AxB 30 x 30	Air flow rate en m3/ h 1 / 2000
Filtres - n° - dimensions en cm n° 2 - 40 x 50	Régulateur de vitesse NO
Lamp - n° - W n° 1 - 20 w	Holes for injection A1xB1 NO
Recessed lighting	YES with tempered glass cover
Welded fat collection chute	YES
Completely welded	NO
volume without packaging	1,10
kg without packaging	0

NOTE: